



Chittenden County  
Metropolitan Planning  
Organization

Michele Boomhower  
Executive Director

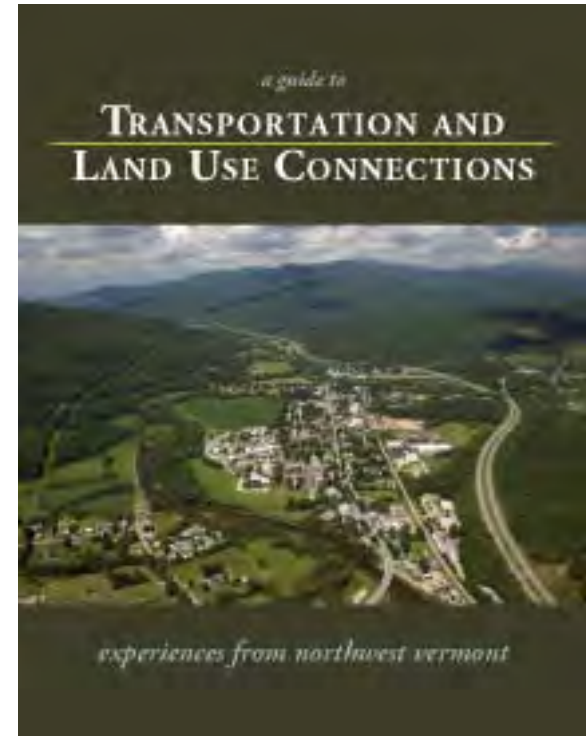
Chittenden County  
Metropolitan Planning  
Organization  
Winooski, VT

[mboomhower@ccmpo.org](mailto:mboomhower@ccmpo.org)

[www.ccmpo.org](http://www.ccmpo.org)

(802) 660-4071 x15

<http://www.transportation-landuse.org/>





Chittenden County  
Metropolitan Planning  
Organization

**National Leadership  
NADO/AMPO Collaboration**

**Vermont Case Study  
RPO/MPO Collaboration**

*Seamless  
Statewide  
Coverage*



January 2009

**Metropolitan and  
Rural Transportation Planning:**  
*Case Studies and Checklists for Regional Collaboration*



A publication of the  
National Association of Development Organizations (NADO) Research Foundation  
and Association of Metropolitan Planning Organizations (AMPO)  
with support from the Federal Highway Administration

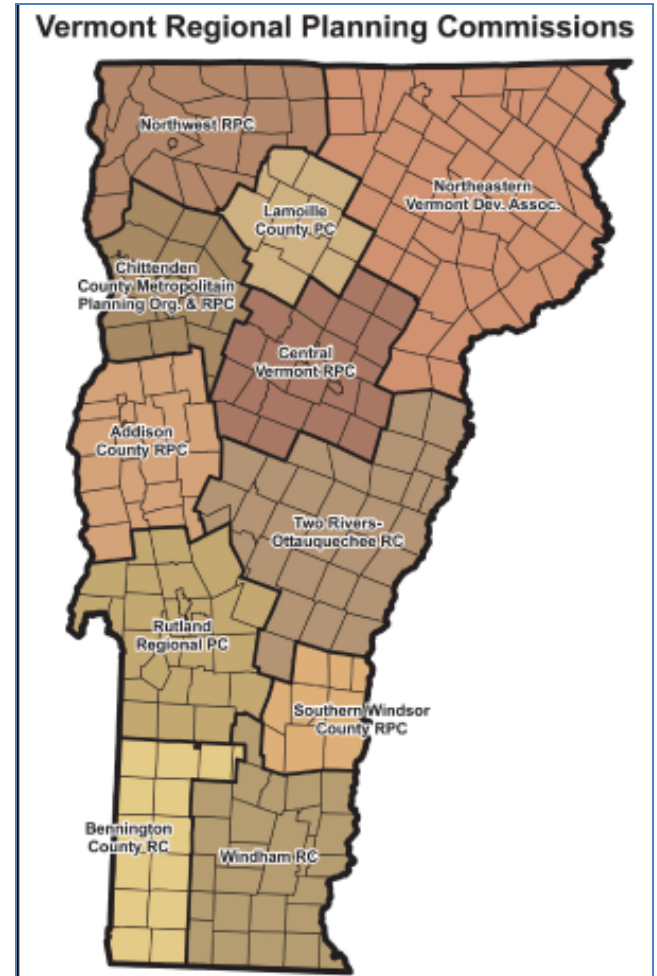
National Association of Development Organizations  
Metropolitan and Rural Transportation: Case Studies for Regional Collaboration  
March 31, 2010



## Vermont Case Study RPO/MPO Collaboration *Seamless Statewide Coverage*

### **Vermont Association of Planning & Development Agencies (VAPDA)**

- 11 Regional Planning Commissions
- 1 Metropolitan Planning Organization
- VT Agency of Transportation (VTrans)
- VT Agency of Commerce & Community Development (ACCD)
- VT Agency of Natural Resources (VANR)
- VT Agency of Administration (VAOA)



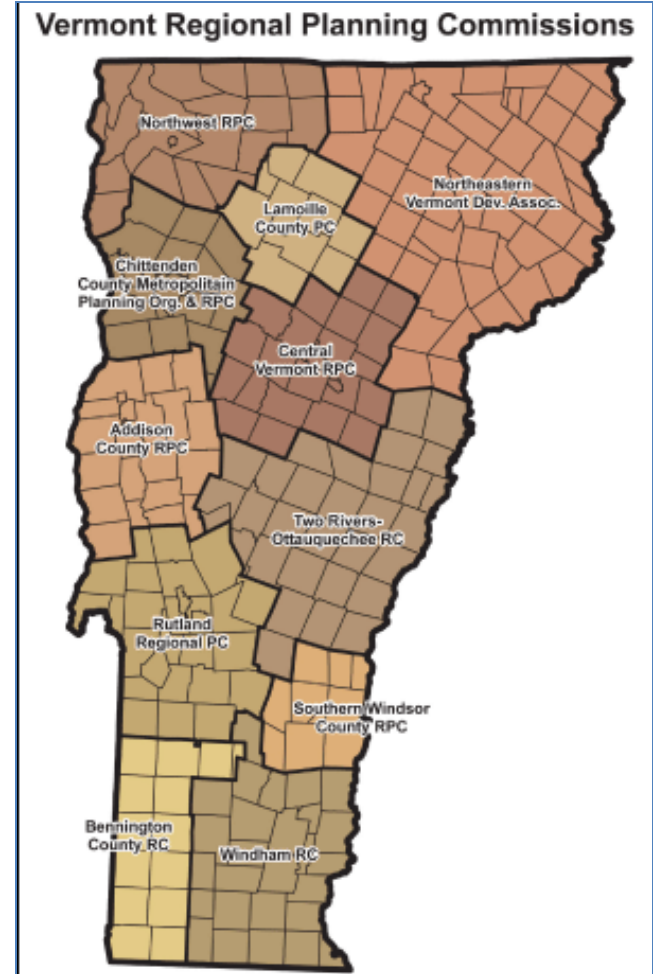


Chittenden County  
Metropolitan Planning  
Organization

## Vermont Case Study RPO/MPO Collaboration *Seamless Statewide Coverage*

### **Vermont Association of Planning & Development Agencies (VAPDA)**

- RPC/MPO Director/Board Member
- Resource Agency Staff Representation
- Guest Speakers
- Once Quarterly Full VAPDA
- Once Quarterly Resource Agency Staff & Directors
- Once Quarterly Directors Only



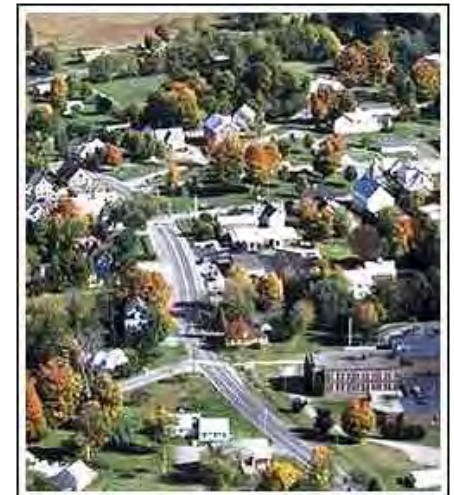


Chittenden County  
Metropolitan Planning  
Organization

Vermont Case Study  
RPO/MPO Collaboration  
*Seamless Statewide Coverage*

## ***Coordinated Statewide Transportation Planning***

- Statewide Transportation Planning Initiative (TPI)
- Coordinated by VTrans Planning, Outreach & Community Affairs with assistance from VAPDA
- Monthly Meetings of Transportation Planning Staff/Directors
- Quarterly Executive Staff Meeting with VTrans Division Heads and VAPDA Directors
- VTrans Representation at VAPDA
- Pass Through Funding Agency



## ***Coordinated Statewide Land Use Planning***

- Statewide Coordination with the VT Agency of Commerce, Department of Housing & Community Affairs (ACCD/DHCA)
- Quarterly Director Meetings
- Vermont Land Use Education & Training Collaborative
- ACCD/DHCA Representation at VAPDA
- Pass Through Funding Agency



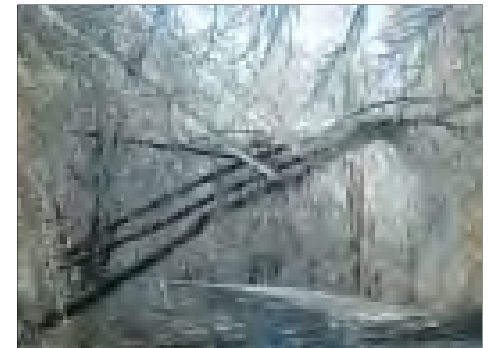


Chittenden County  
Metropolitan Planning  
Organization

Vermont Case Study  
RPO/MPO Collaboration  
*Seamless Statewide Coverage*

## Coordinated Public Safety Planning

- VT Department of Public Safety Statewide Coordination with the VT Emergency Management & VT Homeland Security (DPS/VEM/HSU)
- 4 Public Safety Districts – 4 Regional Planning Coordinating Areas
- Quarterly Public Safety District Meetings including VAPDA representation
- Cross Agency / Planning Discipline Coordination (including CCMPO)
- DPS/VEM/HSU Representation at VAPDA
- Pass Through Funding Agency



National Association of Development Organizations  
Metropolitan and Rural Transportation: Case Studies for Regional Collaboration

March 31, 2010

## Coordinated Natural Resource Planning

- Statewide Coordination with the VT Agency of Natural Resources (VANR)
- Bi-Annual Director – Agency Secretary Meetings
- Vermont Land Use Education & Training Collaborative
- VANR Representation at VAPDA
- Pass Through Funding Agency





**Vermont Case Study**  
**RPO/MPO Collaboration**  
*Seamless Statewide Coverage*

## **Coordinated Utility Planning**

- VT Department of Public Service (DPS)
- Energy & Communications Planning
- Cross Agency / Planning Discipline Coordination (including CCMPO)
- Coordination with VAPDA
- Pass Through Funding Agency





Chittenden County  
Metropolitan Planning  
Organization



## Vermont

- Population: 621,760 (July 2009)
- Labor Force: 361,100 (February 2009)

## Chittenden County

- Vermont's largest employment center
- 1 / 4 of Vermont's Population
- 1 / 3 of Vermont's Jobs
- Ongoing worker commuter shed expansion
- 1990–2000 44% increase in Franklin County commuters (7,300 trips per day)

National Association of Development Organizations

Metropolitan and Rural Transportation: Case Studies for Regional Collaboration

March 31, 2010



Chittenden County  
Metropolitan Planning  
Organization



## The Northwest Vermont Project

A collaborative effort to study growth and development in northwestern Vermont as it related to the region's transportation infrastructure.

- CCMPO, 5 Regional Planning Commissions in Northwest VT, FHWA, VT Agency of Transportation (VTrans)
- 4 Year Project (2004 – 2008)
- Funded by FHWA and VTrans
- Eight planning tools developed
- Purpose: to assist municipalities with managing growth and development while protecting character and resources

National Association of Development Organizations

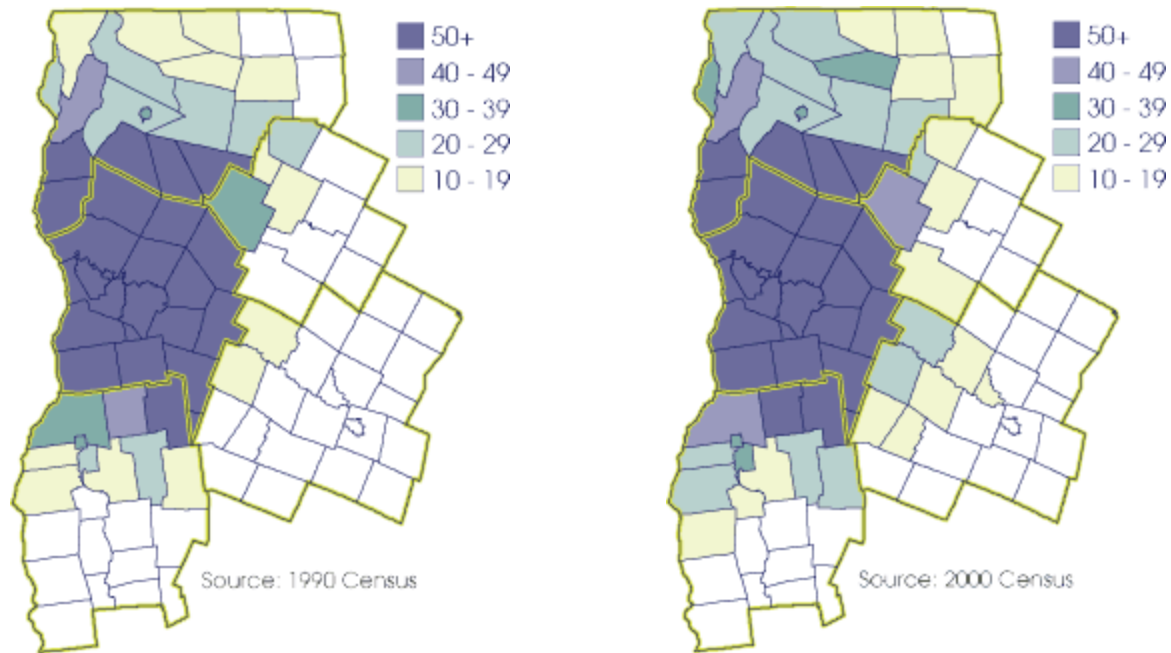
Metropolitan and Rural Transportation: Case Studies for Regional Collaboration

March 31, 2010



Chittenden County  
Metropolitan Planning  
Organization

## Northwest Vermont Project



## Percentage of Workers Employed in Chittenden County, 1990 and 2000

National Association of Development Organizations  
Metropolitan and Rural Transportation: Case Studies for Regional Collaboration  
March 31, 2010



Chittenden County  
Metropolitan Planning  
Organization



## The Northwest Vermont Project

### Overarching Goals:

- To project future growth at the local level using state-of-the-art growth modeling tools;
- To assess municipalities' abilities to manage growth now and in the future;
- To develop model tools and strategies to be used by municipalities to plan for future growth in a manner that reflects local land use and transportation goals.

National Association of Development Organizations  
Metropolitan and Rural Transportation: Case Studies for Regional Collaboration  
March 31, 2010



Chittenden County  
Metropolitan Planning  
Organization

## Northwest Vermont Project



Each RPC carried out the Northwest Vermont Project differently in their respective regions

### Addison County

- Build-out analysis
- Visual evaluation of the corridors
- Evaluation of safety issues
- Access management guidelines

### Franklin and Grand Isle Counties

- Development constraint analyses
- Build-out analyses
- Identification of community's capacity to manage growth and identified future growth management needs

National Association of Development Organizations

Metropolitan and Rural Transportation: Case Studies for Regional Collaboration

March 31, 2010



Chittenden County  
Metropolitan Planning  
Organization

## Northwest Vermont Project



Each RPC carried out the Northwest Vermont Project differently in their respective regions

### Chittenden County

- Growth forecasting and analysis
- Access management

### Lamoille County

- Model road standards ordinance
- Town of Cambridge
- Cost of Community Services Study
- Land Use Regulations

### Washington County

- Development potential analysis
- Build-out analysis

National Association of Development Organizations

Metropolitan and Rural Transportation: Case Studies for Regional Collaboration

March 31, 2010



Chittenden County  
Metropolitan Planning  
Organization



## Other Inter-Regional Projects

### Vermont Route 15 Corridor Management Plan

- Caledonia, Lamoille, Chittenden Counties
- 51 miles corridor spanning 8 Communities
- CCMPO, 3 RPCs, VTrans

### Western Corridor Transportation Management Plan

- Canadian Border to the Massachusetts Border
- CCMPO, 5 RPCs, Vtrans, FHWA
- Multimodal



Chittenden County  
Metropolitan Planning  
Organization



## Other Inter-Regional Projects

### CCMPO 2060 Metropolitan Transportation Plan Update

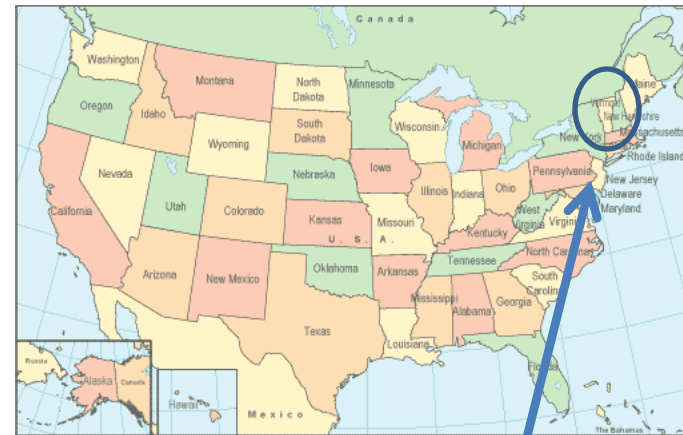
- Northwestern Vermont Region
- 5 Regional Planning Commissions, CCMPO, Vtrans, FHWA
- Population, Land use Development and Commuter-shed Impacts
- Beyond the CCMPO Model Boundary Area
- Jump start the Statewide Travel Demand Model

### CCTA Transit Development Plan

- Short Range Transit Plan
- Northwestern/Centralwestern Vermont Regions
- 6 Regional Planning Commissions, CCMPO, Vtrans



**Chittenden County  
Metropolitan Planning  
Organization**



## The Regional - National Agenda

### Membership in the New England Association of Regional Councils (NEARC)

- Executive Committee Participation
- Regular Hosting of Annual Meeting
- Participation in Education & Training Events

### Membership in NADO and AMPO (CCMPO)

- Executive Committee Participation
- Officer Level Participation
- Sponsorship of Conferences
- Participation in Education & Training Events

### Regular Coordination with Congressional Delegation

National Association of Development Organizations

Metropolitan and Rural Transportation: Case Studies for Regional Collaboration

March 31, 2010

**What Can  
Vermont Do?**